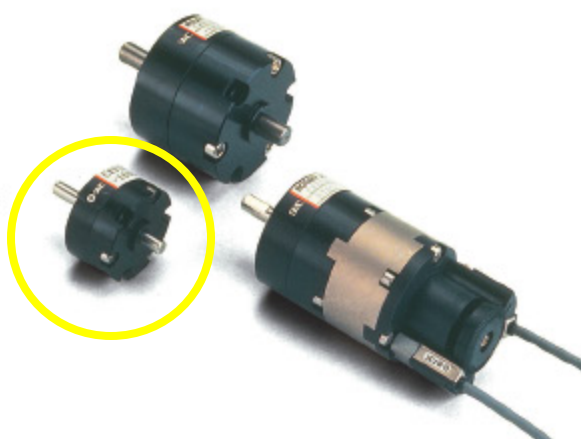


VANE TYPE ROTARY ACTUATOR:  
BORE SIZES Ø10•15•20•30MM  
SERIES NCRB1BW

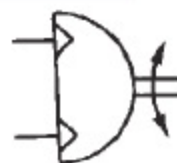
- ✓ 90°, 180°, 270° rotation
- ✓ High reliability and long life
- ✓ Light weight
- ✓ Optional auto switch and adjustable rotation



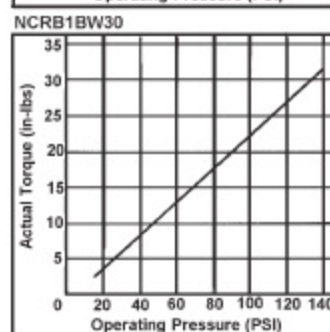
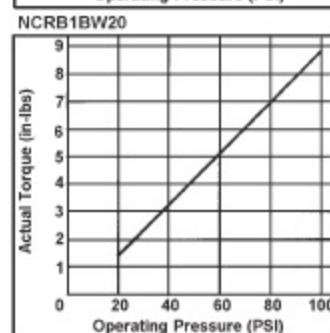
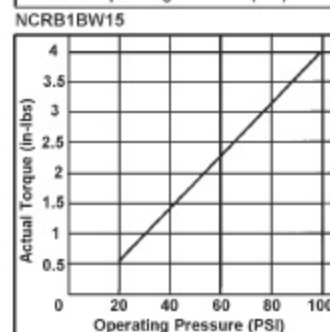
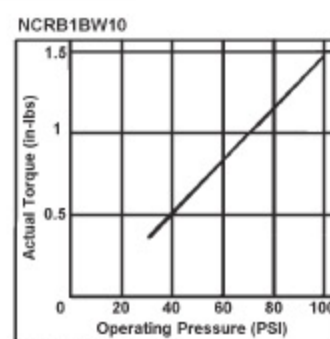
TECHNICAL SPECIFICATIONS

Model	CRB1BW10	CRB1BW15	CRB1BW20	CRB1BW30
Rotation	90° / 180° / 270°			
Fluid	Air			
Proof Pressure	1.05MPa / 153PSI		1.5MPa / 218PSI	
Operating Pressure Range	0.14 ~ 0.7MPa / 20~100PSI		0.1~0.23MPa/15~40PSI	
Rotation Speed Range (s/90°)	0.03~0.3		0.04~0.3	
Maximum	90°	4	4	4
Operating	180°	3.5	3	3
Cycle (Nz)	270°	2.5	2	2
Ambient and Op Fluid Temp	5 ~ 60°C / 40 ~ 140°F			
Lubrication	No Lubrication Required			
Type Of Shaft	Double End Shaft / Both With Flat			
Type Of Mounting	Basic, Flange			
Rotation Tolerance	+5° -0	+4° -0		

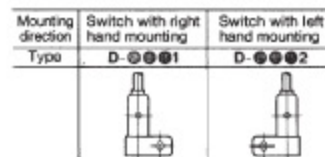
SYMBOLS



TORQUE SPECIFICATIONS

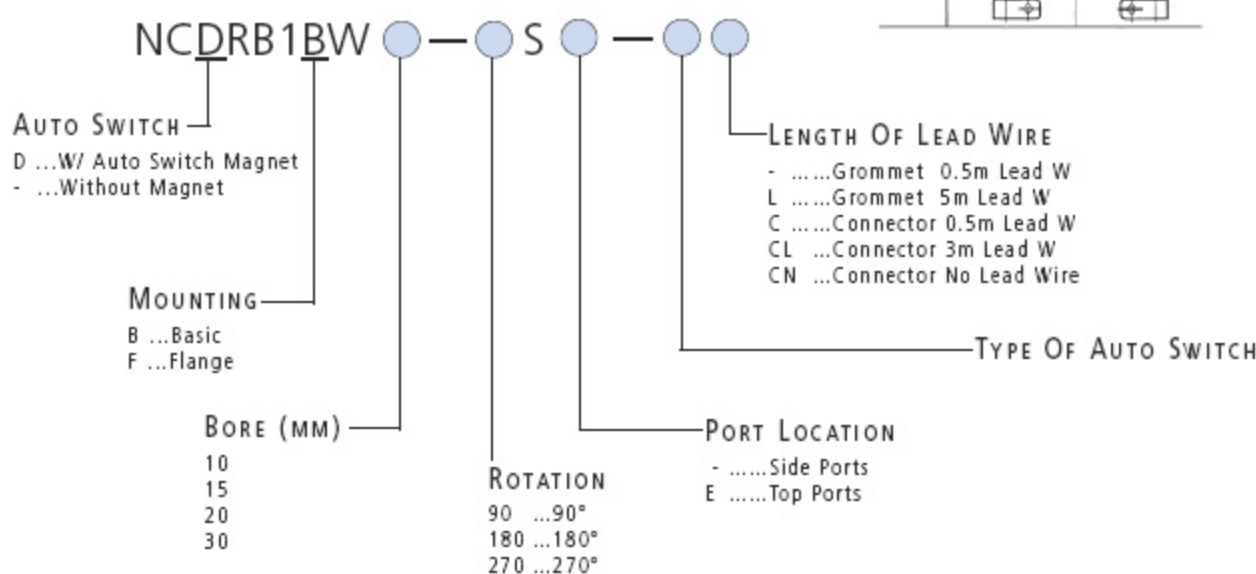


FITTING LOCATION AND ROTATION OF AUTO SWITCH



HOW TO ORDER

NCRB1BW ROTARY ACTUATOR



FOR MORE TECHNICAL INFORMATION ON THIS SERIES, PLEASE REFER TO CAT:N350

DIMENSIONS SEE NEXT PAGE

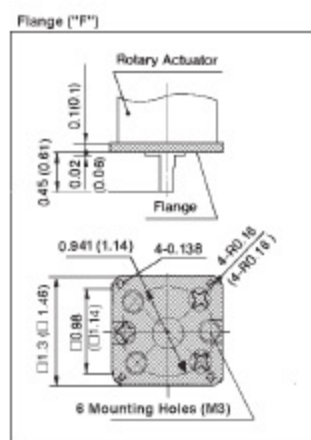
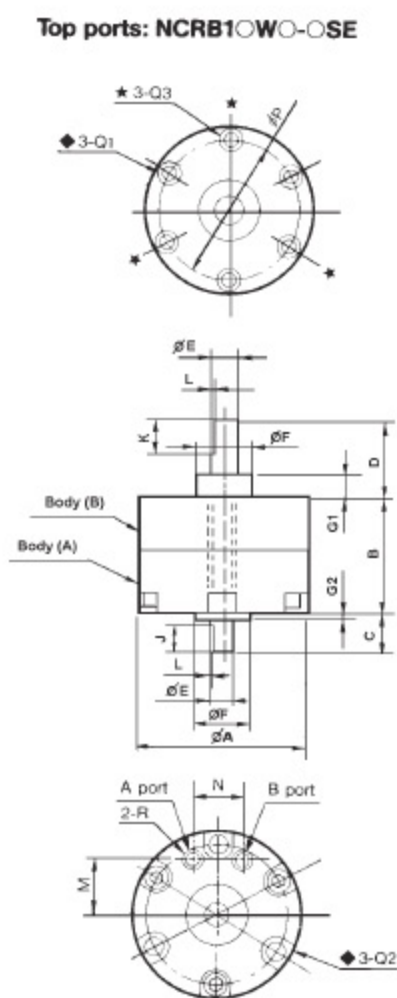
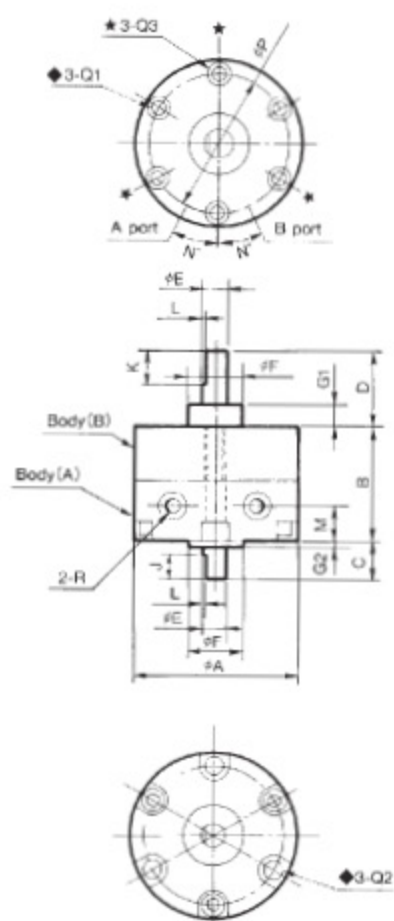
ACCESSORIES SEE NEXT PAGE



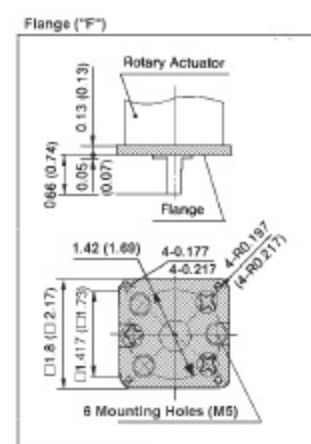
FOR FURTHER TECHNICAL DETAILS ON THIS PRODUCT, REQUEST CATALOG REFERENCE N350

## DIMENSIONS WITH SIDE PORTS NCRB1\_W\_-\_S ROTARY ACTUATOR

## DIMENSIONS WITH TOP PORTS NCRB1\_W\_-\_SE ROTARY ACTUATOR



Dim for NCR1W10  
( ) : Dim for NCRB1W15



Dim for NCR1W20  
( ) : Dim for NCRB1W30

Model (Dimensions in Inches)	A	B	C	D	E		F		G		J	K	L	M	N	P	Q (Depth)			R		
					Tolerances	Tolerance	G1	G2	Q1	Q2							Q3	90°	180°	270°		
NCRB1_W10_S	1.14	0.59	0.31	0.55	5/32	-0.00015	3/8	0	0.12	0.04	0.20	0.35	0.02	0.20	25	0.95	5-40UNC (0.2)	0.14 (0.26)	-	10-32UNF	M3	
NCRB1_W10_SE						-0.00045		-0.0012						0.33	0.37					M3		
<b>NCRB1_W15_S</b>	<b>1.34</b>	<b>0.79</b>	<b>0.35</b>	<b>0.71</b>	<b>3/16</b>	<b>-0.00015</b>	<b>15/32</b>	<b>0</b>	<b>0.16</b>	<b>0.06</b>	<b>0.24</b>	<b>0.39</b>	<b>0.02</b>	<b>0.20</b>	<b>25</b>	<b>1.14</b>	<b>5-40UNC</b> (0.39)	<b>0.14</b> (0.24)	<b>5-40UNC</b> (0.2)	<b>10-32UNF</b>		M3
NCRB1_W15_SE						-0.00045		-0.0016						0.43	0.39					M3		
NCRB1_W20_S	1.65	1.14	0.39	0.79	15/64	-0.00015	9/16	0	0.18	0.06	0.28	0.39	0.02	0.35	25	1.42	8-32UNC (0.53)	0.18 (0.43)	8-32UNC (0.3)	10-32UNF		
NCRB1_W20_SE						-0.00045		-0.0016						0.55	0.51							
NCRB1_W30_S	1.97	1.57	0.51	0.87	5/16	-0.00002	5/8	0	0.20	0.08	0.31	0.47	0.04	0.39	25	1.69	10-24UNC (0.71)	0.21 (0.65)	10-24UNC (0.4)	10-32UNF		
NCRB1_W30_SE						-0.00006		-0.0016						0.61	0.55							

## ACCESSORIES NCRB1BW ROTARY ACTUATOR

SWITCH MOUNTING CLAMP ASSEMBLY	
Model	Part No
NCDRB1BW10	P211170-1
NCDRB1BW15	P211190-1
NCDRB1BW20	P211160-1
NCDRB1BW30	P211180-1

FLANGE MOUNTING ASSEMBLY	
Model	Part No
NC_R1FW10	P211170-2
NC_R1FW15	P211190-2
NC_R1FW20	P211160-2
NC_R1FW30	P211180-2

FOR MORE TECHNICAL INFORMATION ON  
THIS SERIES, PLEASE REFER TO CAT:N350

MORE  
DIMENSIONS  
SEE NEXT PAGE

MORE  
ACCESSORIES  
SEE NEXT PAGE

SEE INSIDE FRONT COVER FOR  
DETAILS OF YOUR LOCAL SALES OFFICE



FOR FURTHER TECHNICAL  
DETAILS ON THIS  
PRODUCT, REQUEST  
CATALOG REFERENCE  
N350